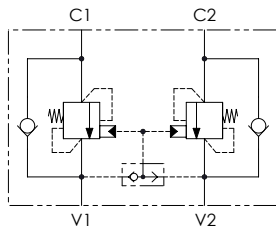


Schema idraulico - Hydraulic circuit

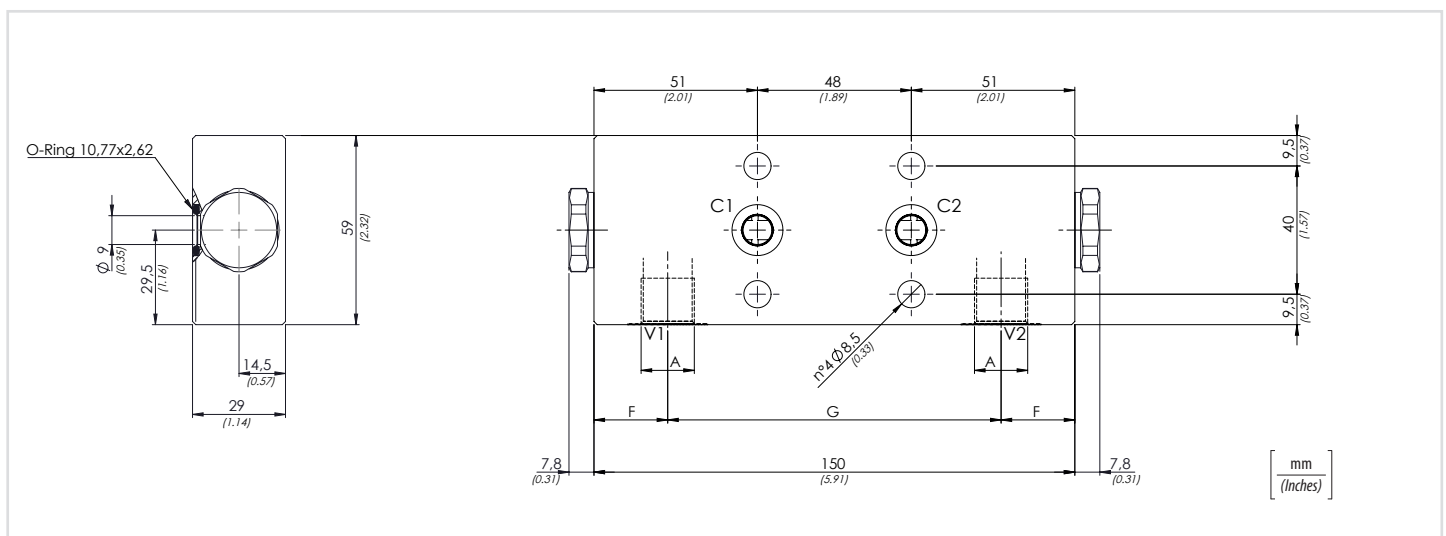
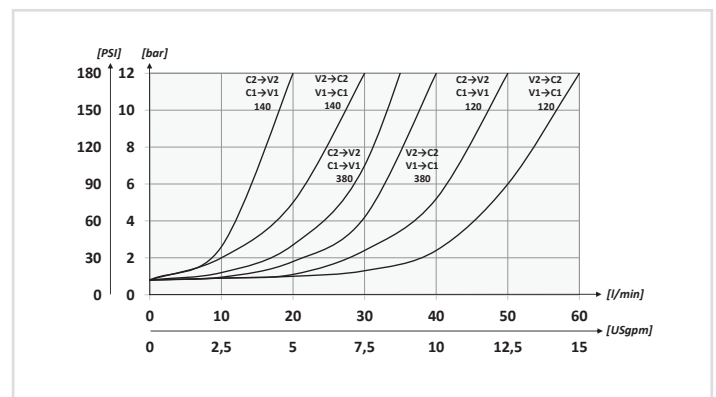


Dati tecnici - Technical data

olio idraulico/Mineral oil	ISO 6743/4 (DIN 51524)
Viscosità olio/Oil viscosity	15-250 mm ² /s (15 to 250 cSt)
Classe di contaminazione max con filtro Max contamination index with filter	ISO 4406:1999 Classe 19/17/14
Temperatura dell'olio/Oil temperature	-20°C +80°C -4°F +176°F
Temperatura ambiente/Ambient temperature	-20°C +50°C -4°F +122°F
È indispensabile l'utilizzo di un filtro per proteggere la valvola (filtrazione consigliata 15 µm) It is necessary a filter use to protect the valve (advised filtration 15 µm)	

Codice ordinazione Ordering code	01	02	03	04
	VBZG		2	
01	Valvole di bilanciamento doppie per centro aperto - flangiate a taratura fissa (Dual counterbalance valves fixed setting for open center - flanged version)			VBZG
02	Dimensione (Size)	BSPP 1/4		140
		BSPP 3/8		380
		BSPP 1/2		120
03	Taratura (Setting) Q=5 l/min 350 bar (5075 PSI)			2
04	Materiale (Material)	Corpo in acciaio + zincatura (Steel body + zinc-plated)		S
		Corpo in acciaio + zinco-nichel (Steel body + zinc-nickel)		K
Rapporto di pilotaggio (Pilot ratio) 1:4.25				

Performances



Caratteristiche tecniche - Technical characteristics

Tipo Type	A	Portata max Max flow l/min-USgpm	Pressione max (bar) Max pressure (PSI)	G	F	Peso approssimativo (kg) Approx weight (lb)
VBZG140	BSPP 1/4	40 (10.6)	350 (5075)	104 (4.09)	23 (0.91)	1,98 (4.24)
VBZG380	BSPP 3/8					
VBZG120	BSPP 1/2	60 (15.9)		108 (4.25)	21 (0.83)	1,88 (4.03)