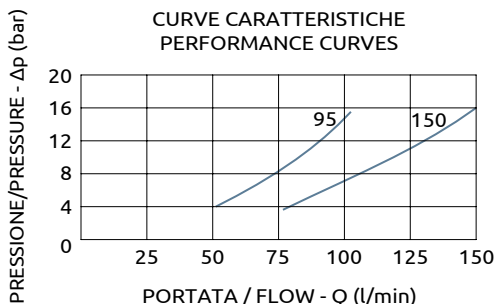
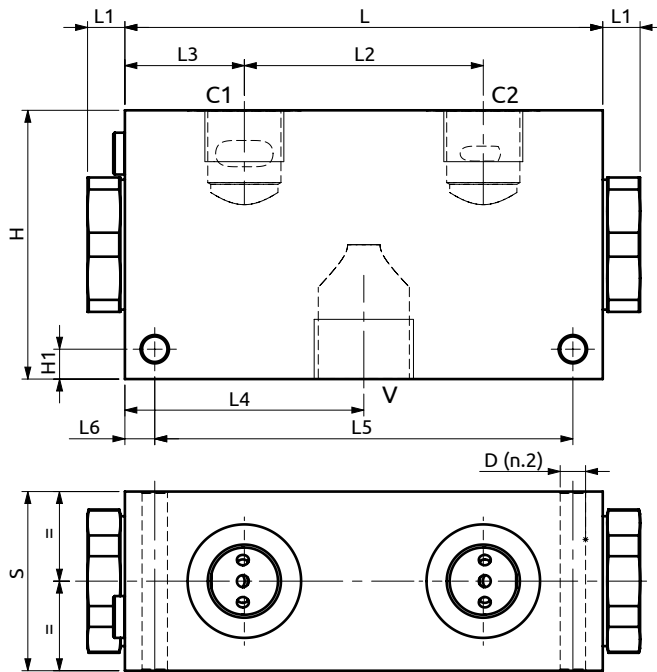
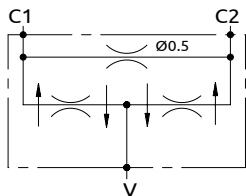




Divisori e riunificatori di flusso
Flow dividers/combiner



Corpo in acciaio / Steel body

160	12.5	80	40	80	140	10	60	90	10	Ø8.5
L	L1	L2	L3	L4	L5	L6	S	H	H1	D



DESCRIZIONE	DESCRIPTION
Le valvole permettono di dividere il flusso d'olio in ingresso in due portate uguali, indipendentemente dalle pressioni di lavoro sui due rami. Nel verso opposto mantengono uguali le portate riunificate.	These valves split the inlet flow in two equal parts and keep equal the flows in the reverse direction, regardless of the working pressure on both lines.

Codice Ordinazione	Campo di Portata errore Max: ±3%	Pressione Max	Dimensione Porte		Peso
Ordering Code	Flow Range Max error: ±3%	Max Peak Pressure	Port Size		Weight
A140600.01.00	90-150 l/min	400 bar	V	1"G	6 kg
			C1, C2	3/4"G	
A140600.02.00	50-95 l/min	400 bar	V	1"G	6 kg
			C1, C2	3/4"G	