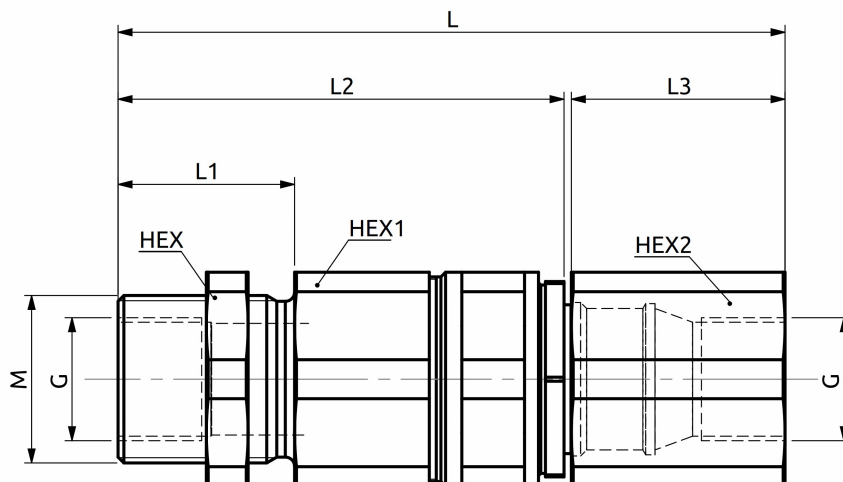
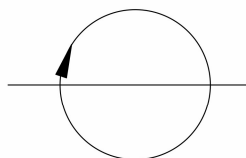


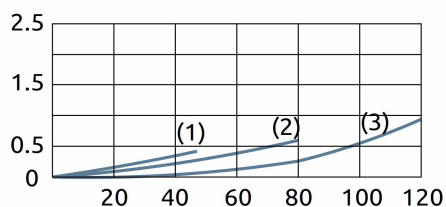


Raccordi girevoli Revolving connectors



PRESSIONE / PRESSURE - Δp (bar)

CURVE CARATTERISTICHE
PERFORMANCE CURVES



PORTATA / FLOW - Q (l/min)

- 1: 3/8"G
2: 1/2"G
3: 3/4"G

Corpo in acciaio / Steel body

110.4	30	75	34	32	32	30	M24X1.5	3/8"G
111.4	32	75	35	41	36	30	M30X2	1/2"G
143.6	38	96	46	46	46	46	M36X2	3/4"G
L	L1	L2	L3	HEX	HEX1	HEX2	M	G



DESCRIZIONE

Raccordo girevole a bassa coppia di trascinamento anche a pressioni elevate.

DESCRIPTION

Revolving connector with low resistant torque even at high working pressure.

Codice Ordinazione	Portata Massima	Pressione Max	Dimensione Porte M	Dimensione Porte G	Peso
Ordering Code	Max Flow	Max Pressure	Port Size M	Port Size G	Weight
A170302.51.00	45 l/min	350 bar	M24X1.5	3/8"G	0.7 kg
A170402.51.00	60 l/min	350 bar	M30X2	1/2"G	0.8 kg
A170602.51.00	120 l/min	350 bar	M36X2	3/4"G	0.95 kg